

## Lean Tool Management Solution

*WinTool* is the popular solution to build a central tool data library. All tooling tasks in engineering, job planning, tool crib, tool setup, manufacturing, and tool technology are supported by the software. Standard *WinTool* Modules interface CAM software, presetting gages, storage lift controls, ERP, and PDM systems. With *WinTool* you simplify your work processes, keep a lean tool inventory, and improve your overall equipment effectiveness.

### Features

#### Tool Library

- Central database for tools, lists, fixtures, inspection equipment.
- Runs on SQL Server, Access, or Oracle (optional).
- Tool data release control with history and revision index.
- Tool search by machines, geometry, work material, availability, etc.

#### Tool Graphics

- DXF-Generator and graphic tool assembly.
- Shape-Generator for 3D tools.
- 2D CAD software included.
- Tool manufacturer catalogs.

#### Documentation

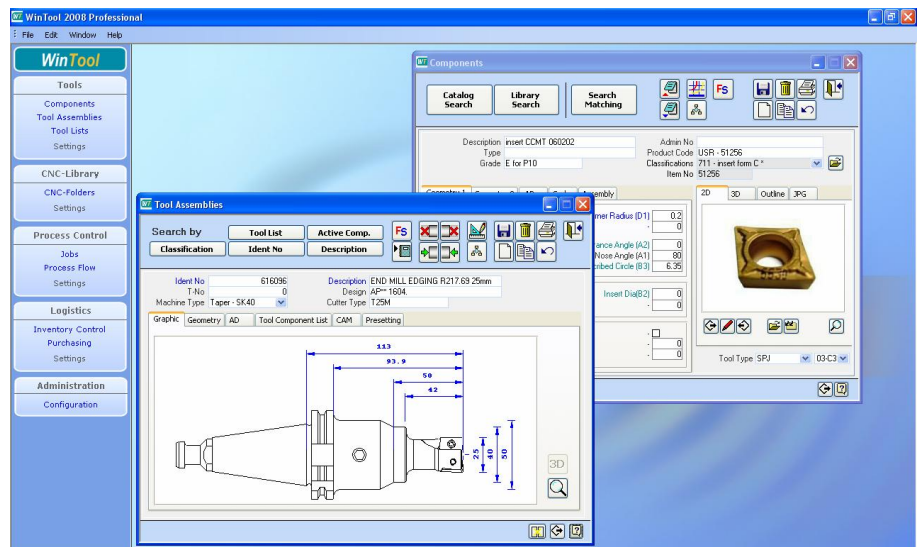
- Tool documentation incl. graphics, parts lists, measuring instructions, technology archive.

#### Extensions

- Interfaces for CAM, presetting gages, ERP, lift controls.
- Process Logistics.
- Data-archive for NC-Operations.

#### Requirements

- Windows 2000, XP, Vista, x64



### Main Tasks

- File tools (and fixtures) by consistent standards and classification and find it quickly.
- Assemble and document tools automatically and error-free.
- Quickly compile and print tool lists for presetting, machine setup, or purchasing.
- Interface tool data with 3<sup>rd</sup> party applications.
- Access tool information from any seat in the company.

### Your Benefits

- Easy and central tool data maintenance.
- Controlled tool release.
- Optimal tool selection and technology by machine.
- Detailed, error-free, and standardized tool documentation.
- Free *WinTool* viewer license to access tool library data from any seat in your company.

**DATOS**

[www.wintool.com](http://www.wintool.com)

## Being Used Successfully Every Day



*"WinTool was a strategic necessity for our company because of quick growth. The software is being praised for its pragmatic concept, can easily be integrated, has low data maintenance costs, and an excellent price performance ratio."* Daniel Odermatt (Project Manager), Synthes/Switzerland



*"Now I get detailed tool reports for each task: item pick-list, tool setup instructions, and CNC tool list. I work faster, without glitches, and reduced machine standstill. In other words, we gained 30% machine capacity."* Patrick Walton (Tool Crib Manager), Cla-Val Co./USA



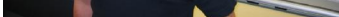
*"With WinTool we need less time to write and simulate our NC-programs. At the same time the quality of our work has improved. The tool setup problems have vanished now."* Michael Debras (Engineering Manager), Goodyear SA/Luxembourg



*"Our experienced tool crib staff records best-praxis-assemblies for each machine in WinTool so our CATIA-programmers use only realistic tool representations and do not waste their valuable time on tool data maintenance. We can also effectively standardize our tooling."* Rainer Stade (Manager CAM), Herbert Olbrich/Germany

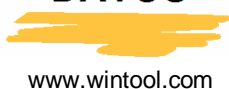


*"In UG NX we import the WinTool data online. We pick tool assemblies from other jobs, know exact collision points, and cutting values. We always know where our tools are now."* Patrick Delisse (NC Engineer), DutchAero BV/Holland



*"In the future we will record all tools for new machines in WinTool before we start with production to quickly use the full capacity. WinTool manufacturer catalogs are helpful to define a tool package for a new machine."* Helge Lotveit (Engineering Manager), Rolls-Royce/Norway

**DATOS**



[www.wintool.com](http://www.wintool.com)



33 West Higgins Suite 955  
South Barrington, IL 60010  
Phone: 847 844-3460  
Fax: 847 844-3543  
info@dlogsfdm.com  
www.dlogsfdm.com